



atomix
PRODUCTIONS
SOUND TECHNOLOGY PROVIDER



MIXTOUR

VIRTUALDJ

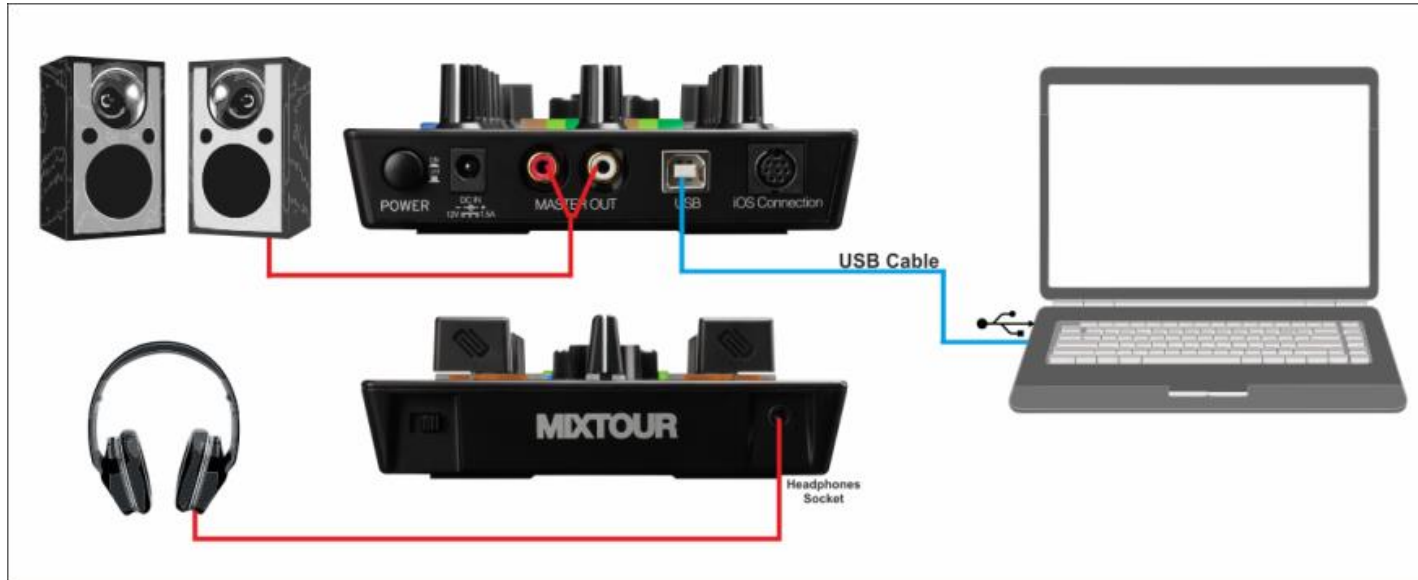
AUDIO & VIDEO MIXING
DJ SOFTWARE

&



QUICK SETUP GUIDE

Step 1 . CONNECTIONS



Reloop Mixtour – Connection diagram

Connect the MIXTOUR with your computer using the provided USB cable. Connect your Headphones to the front socket of the MIXTOUR and your amplifier/amplified speakers to the Master Out socket at the rear side using an RCA cable. AC Power adaptor is not required.

Step 2. INSTALLATION

DRIVERS

Windows

Install the **Reloop ASIO*** drivers from
<http://www.reloop.com/reloop-mixtour>

Mac OSX

No drivers are required to be installed

** The Reloop ASIO Drivers are optional. VirtualDJ will use the native Windows WASAPI drivers if not installed, without any operational issue.*

VIRTUALDJ

Download Link

<http://www.virtualdj.com/download/index.html>

Required Licenses (for full usage)*

Pro Infinity, PLUS Controller, Pro Subscription
<http://www.virtualdj.com/buy/index.html>

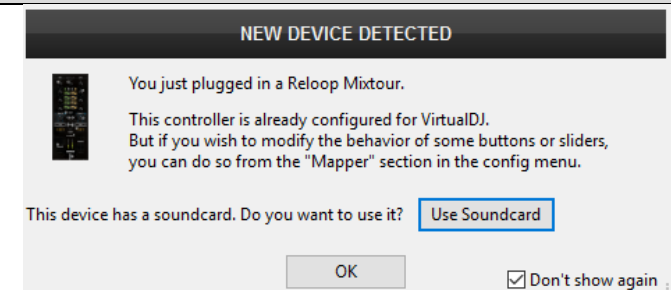
** Without any of the mentioned licenses, the MIXTOUR will operate fully for 10 minutes each time you re-launch VirtualDJ as demo.*

Step 3. Opening VIRTUALDJ

VIRTUALDJ – Detection window

Click to **“Use Soundcard”**. VirtualDJ will automatically create the necessary audio configuration.

Click to **OK**



Step 4. Operations

#	CONTROL	OPERATION	SHIFT OPERATION
1	CROSSFADER	Blends left-right assigned audio signals	
2	VOLUME FADER	Adjust Deck Output Volume	Stops the track at the CUE position when reached minimum position. Plays the track from the CUE when moved to any other position. (FADER START/STOP)
3	VU METERS	Front Switch to Left : Indicate Master Output Level Front Switch to Right : Indicate Deck pre-fader Output level	
4	PFL	Sends Deck audio signal to Headphones Channel	Start/Stop Prelisten Player
5	LOAD	Load selected track to deck	Left LOAD : cycle through Sideview windows Right LOAD : cycle through center Mixer panels
6	FILTER KNOB	Filter mode : Adjust High-Low Pass Filter (middle position Off) FX mode: Adjust High-Low Pass Filter & 1 st Effect Parameter at the same time (middle position Filter Off and Effect parameter at 0%)	Adjust 2 nd Effect Parameter (if available)
7	FILTER/FX MODE	Toggle between Filter (Led Off) and Filter/FX modes (Led On)	Select next available Effect
8	EQ LOW	Adjust Low (Bass) frequencies - Equalizer	
9	EQ MID	Adjust Mid (Middle) frequencies - Equalizer	
10	EQ HIGH	Adjust High (Treble) frequencies - Equalizer	
11	GAIN	Adjust pre-fader Output level (Gain)	
12	MASTER VOLUME	Adjust Volume of Master Output	
13	(T) TRANSPORT MODE	Selects Transport mode	Smart Play



14	(C) CUES MODE	Cycles though HotCue and Sampler mode	HotCue mode : Smart Cue Sampler mode : Next Sampler Bank
15	LOOP	Transport mode : Enable/disable the selected Loop HotCue mode : Sets or triggers HotCue 1 Sampler mode : Triggers Sample 1*	Transport mode : Halves the size of the Loop HotCue mode : Deletes HotCue 1 Sampler mode : Stops Sample 1*
16	SYNC	Transport mode : Syncs tempo and phase with opposite deck HotCue mode : Sets or triggers HotCue 2 Sampler mode : Triggers Sample 2*	Transport mode : Double the size of the Loop HotCue mode : Deletes HotCue 2 Sampler mode : Stops Sample 2*
17	CUE	Transport mode : Sets, triggers and previews the temporary CUE HotCue mode : Sets or triggers HotCue 3 Sampler mode : Triggers Sample 3*	Transport mode : Manual beat Tap HotCue mode : Deletes HotCue 3 Sampler mode : Stops Sample 3*
18	PLAY	Transport mode : Play/pauses track HotCue mode : Sets or triggers HotCue 4 Sampler mode : Triggers Sample 4*	Jumps to the beginning of the track HotCue mode : Deletes HotCue 4 Sampler mode : Stops Sample 4*
19	HEADPHONES VOL	Adjust the Output volume of the Headphones channel	
20	HEADPHONES CUE/MIX	Blends audio signal from Headphones (minimum position) and Master Mix (maximum position)	
21	BROWSE	Scrolls through files or folders If T mode button is pressed, seeks through the track	If track plays on the Prelisten Player, seeks through the track
	BROWSE PUSH	Sets focus to the Songs list	Adds selected track to Automix list
22	BACK	Sets focus to Folders window. Collapses/expands sub-folders if focus is to Folders.	Sets focus to Sideview



(*) If the selected Sampler Bank has less than 5 Samples, both sides will trigger the same Samples. If the selected bank has more than 4 Samples, the left buttons will trigger samples 1 to 4 and the right buttons will trigger samples 5 to 8.

Useful links

VirtualDJ web-page: <http://www.virtualdj.com>

VirtualDJ Support Center: <http://www.virtualdj.com/contact/index.html>

VirtualDJ 8 Operation Guides: <http://www.virtualdj.com/wiki/PDFManuals.html>

Reloop web-page: <http://www.reloop.com/>

Reloop Support Center: <http://support.reloopdj.com/>

Reloop Mixtour product page: <http://www.reloop.com/reloop-mixtour>

Hardware Integration Department



2016 - ATOMIX PRODUCTIONS

Reproduction of this manual in full or in part without written permission from Atomix Productions is prohibited.